



Benefits

- ▶ 1U 17" LED-backlit LCD console drawer
- ▶ 1280 x 1024 native resolution / 16.7M colors
- ▶ Integrated with 8-port DB-15 KVM with 1 x remote console
- ▶ Receiver box included for remote console connection
- ▶ Port switching via OSD, membrane buttons & keyboard hotkeys
- ▶ Hot pluggable, no software or drivers required
- ▶ Cascade levels up to 8 KVM switches
- ▶ 104-key USB keyboard with touchpad
- ▶ One Man installation design
- ▶ New enhanced aesthetics with molded front handle
- ▶ TAA Compliant

Product Specifications

KVM Port	
Port #	8
Connector	DB-15
Connectivity	VGA + USB KB / MS 2-in-1 KVM cable (6 ft)
Resolution	16:9 - max. 1920 x 1080 16:10 - max. 1920 x 1200 4:3 - max. 1600 x 1200

LED-backlit LCD Panel	
Panel size (diagonal)	17"
Native resolution	1280 x 1024
Brightness (cd/m ²)	250
Contrast ratio (typ.)	1000 : 1
Colors	16.7 M
Viewing angle (L/R/U/D)	85/85/80/80
Response time (ms)	5
Dot pitch (mm)	0.264
Display area (mm)	337.92H x 270.33V
Surface treatment	Haze 25%, Hard-coating
Surface hardness	3H
Backlight type	LED
MTBF (hrs)	30,000

Physical	
Product (W x D x H)	442 x 580 x 44 mm 17.4 x 22.8 x 1.73 inch
Packing (W x D x H)	590 x 815 x 140 mm 23.2 x 32.1 x 5.5 inch
Net weight	13 kg / 28.6 lb
Gross weight	19 kg / 41.8 lb

* All dimensions stated are subject to change if options are selected / integrated to base model part codes

Remote Console	
Connector	RJ45
Connectivity	via Cat5 / Cat6 cable to receiver box
Receiver box I/O	VGA + 2 x USB type A for keyboard & mouse
Resolution	16:9 - max. 1920 x 1080 (max. 50 m) 16:10 - max. 1920 x 1200 (max. 50 m) 4:3 - max. 1600 x 1200 (max. 100 m)

Power		
Input	Auto-sensing 100 to 240VAC, 50 / 60Hz	
Consumption	Screen on	Max. 55W
	Power saving mode	Max. 34W

Mounting Distance	
	470 ~ 800 mm 18.5 ~ 31.5 inch

Environment	
Operating temp.	-20 to 65°C degree
Storage temp.	-20 to 65°C degree
Operating humidity	10~90%, non-condensing
Storage humidity	5 ~90%, non-condensing
Operating altitude	16,000 ft
Non-operating altitude	40,000 ft
Shock	10G acceleration (11ms duration)
Vibration	10~300Hz 0.5G RMS random vibration

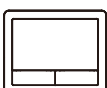
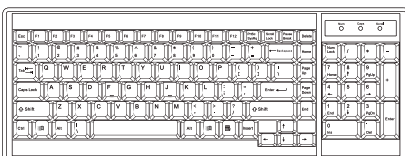
Compliance	
EMC	FCC, CE
Safety	CE / LVD, UKCA
Environment	REACH & RoHS3 / WEEE

Standard Keyboard

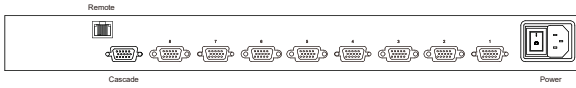
Ge G keyboard with touchpad



U.S.



8-port DB-15 KVM I/O



DB-15 KVM cables

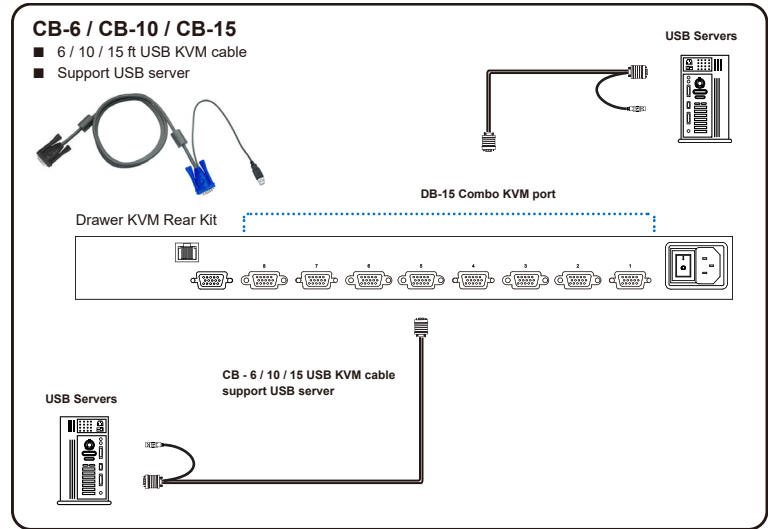


CB - 6 (6 ft)

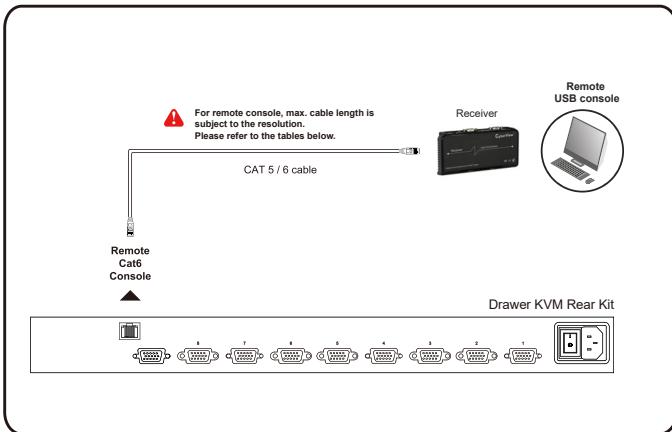
CB - 10 (10 ft)

CB - 15 (15 ft)

KVM Port Connection



Remote Console Connection



Remote Console

Resolution Support	Frequency (Hz)	Max. Cat6 Cable Length (M)
1920 x 1080	60	50
1920 x 1200	60	50
1600 x 1200	60	100
1440 x 900	60	100
1280 x 1024	60	150
1024 x 768	60 / 70 / 75	150

Receiver Connection

